

Overview

Three Tiers, Four positions, Five lengths.

The ultimate shelving system fully adjustable for height, one two or three tier, maximising storage capacity. Unique in versatility, standard traditional positioned brackets can be reversed to be set in a sloping position. The open corner design is suitable for all storage requirements where hygiene is of paramount importance. Shelves can also be arranged in four postures. Complete in a choice of five lengths 600mm, 900mm, 1200mm, 1500mm, 1800mm. The simple lift off design has a clean 20mm clear space between shelving and the wall. Manufactured from 430 type stainless steel.

Model WS1/9 with an additional shelf



Key Features:

- Manufactured from 1.2mm stainless steel.
- Commercial three tiered shelving.
- Adjustable height positions.
- Unique reversed fitting for sloping shelf option.
- Simple click in design
- Choice of lengths 600, 900, 1200, 1500, & 1800mm.
- Open corners for ease of cleaning

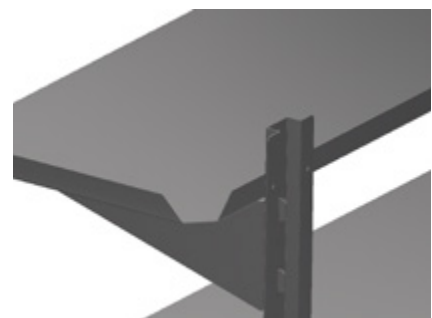
Click in shelf brackets



Capacity

- Usable shelf depth is 300mm with a 20mm hygienic clear space between the shelf and wall, with a weight capacity of 50kg for every 1000mm in length depending on wall fixings.

Hygienic open corner design



Moffat Versatility

- Three Tiers
- Four positions
- Five lengths

One tier wall shelving

Two tier wall shelving

Three tier wall shelving

Note: models 6, 9, 12 are complete with two wall support channels, models 15, and 18 are complete with three wall support channels

| Model | L x D (mm) | Weight (kg) | Model | L x D (mm) | Weight (kg) | Model | L x D (mm) | Weight (kg) |
|--------|------------|-------------|--------|------------|-------------|--------|------------|-------------|
| WS1/6 | 600 x 300 | 3.0 | WS2/6 | 600 x 300 | 5.5 | WS3/6 | 600 x 300 | 7.5 |
| WS1/9 | 900 x 300 | 4.5 | WS2/9 | 900 x 300 | 7.5 | WS3/9 | 900 x 300 | 11.0 |
| WS1/12 | 1200 x 300 | 6.0 | WS2/12 | 1200 x 300 | 10.5 | WS3/12 | 1200 x 300 | 15.0 |
| WS1/15 | 1500 x 300 | 7.5 | WS2/15 | 1500 x 300 | 13.0 | WS3/15 | 1500 x 300 | 19.0 |
| WS1/18 | 1800 x 300 | 9.0 | WS2/18 | 1800 x 300 | 16.0 | WS3/18 | 1800 x 300 | 22.5 |

Note: A maximum of three tiers is recommended.

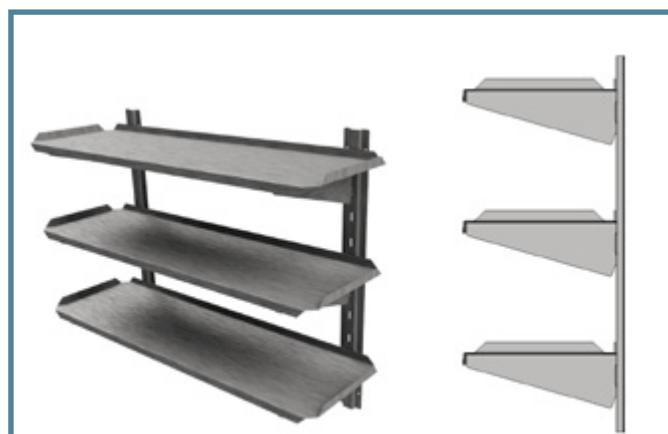
Four positions A, B, C, D.



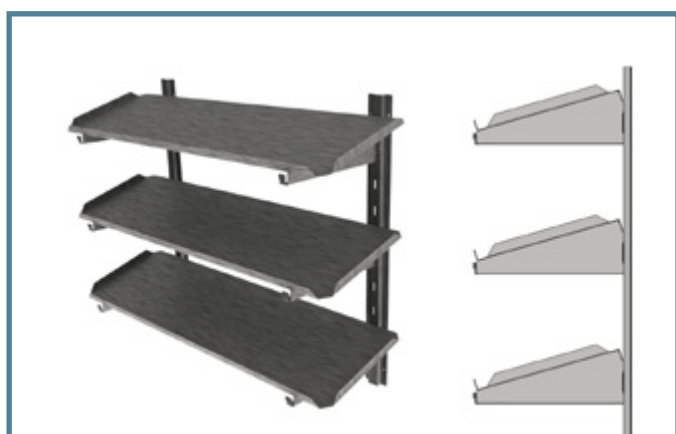
Set in position "A"
(Set level with rear upturn and down turn on the ends)



Set in position "B"
(Set level with rear upturn and up turns on the ends)



Set in position "C"
(Set sloping with a front upturn and up turns on the ends)



Set in position "D"
(Set sloping with a front upturn and downturns on the ends)

