

Overview

Designed specifically for the Moffat bespoke food servery counters. This compact unit allows multiple units to be powered up from one mains supply. Bespoke built units that are integrated into a one piece serving counter can all be powered from one source. Individual mobile items can be linked when multiple 13amp sockets to power the units are unavailable, for example positioned in the centre of a room. The Power station module has an MCB unit fitted with multiple power outlet sockets. The specially made cables for the various counter units are simply run along under the servery and plugged into the power station at one end of the cable, the opposite end of the cable is plugged into the control void of each individual model. The unit is supplied ready for connection a single mains power cable on site. For safety this unit is static (never made mobile) and installation plans must allow a safe position within 3m of the main power supply.



Key Features:

- With hygiene in mind all stainless-steel construction, inner panels are bright polished.
- Low maintenance, easily cleaned.
- Always static (for safety)
- Complete with multiple power cable sockets.
- Multiple individual miniature circuit breakers.
- Lift off door allows easy access too internal control panel.
- Multiple individual miniature circuit breakers.

Options:

- Various colours and styles of front and side panels are available, plastic coated steel, laminated wood type or Corian.
- Various designs of overhead illuminates gantries are available, curved or square type glass, open or full front. Island, Deli, or traditional kitchen pass types can all be fitted.
- Solid tray slide or tubular tray rails fixed or fold down types.



MOFFAT
COUNTER-TEK
 — Specialised Servery Systems —

Each model can be made part of a specially designed bespoke Moffat servery counter, with integrated Granite, Corian, or Stainless worktops

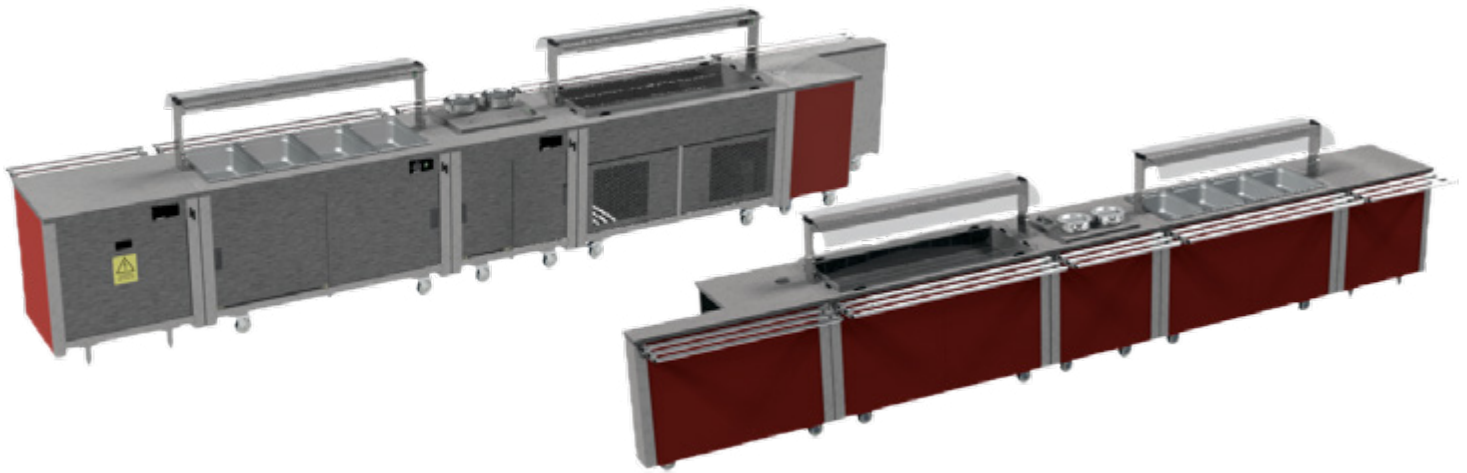


Model	Weight (kg)	L x D x H (mm)	Height to worktop
CPS	65	947 x 700 x 900	900mm

Note: The standard unit depth is 700mm, This models is also available at 800mm deep. Additionally when integrated into a bespoke counter, the worktop depth can be made to suit specific design parameters.

Power Supply:

- Supplied to specification.
- The power station unit must be sited within 3 meters of the incoming power supply connection point.



Typical example of a counter run

