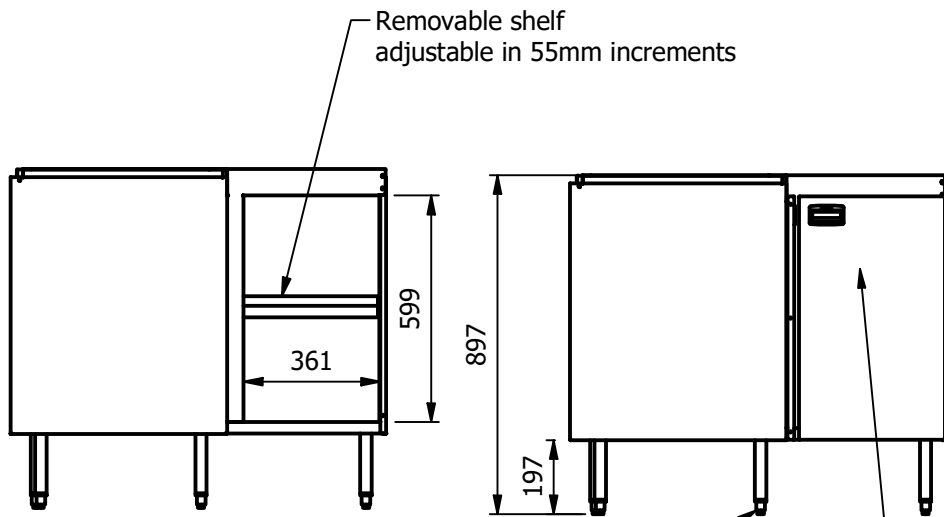
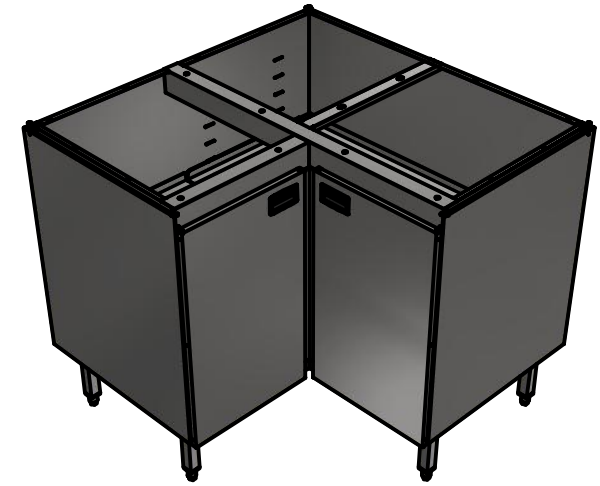
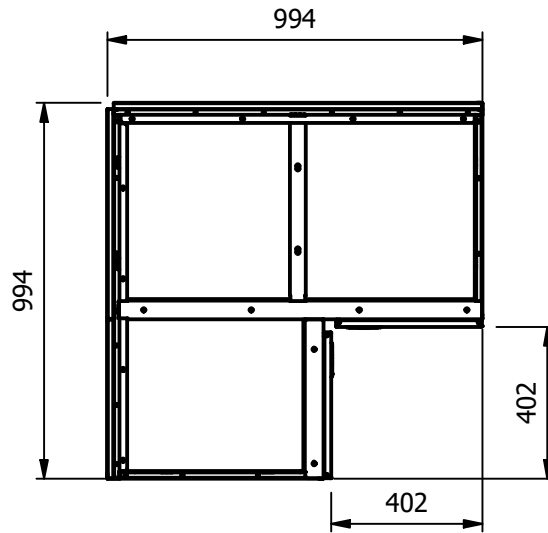


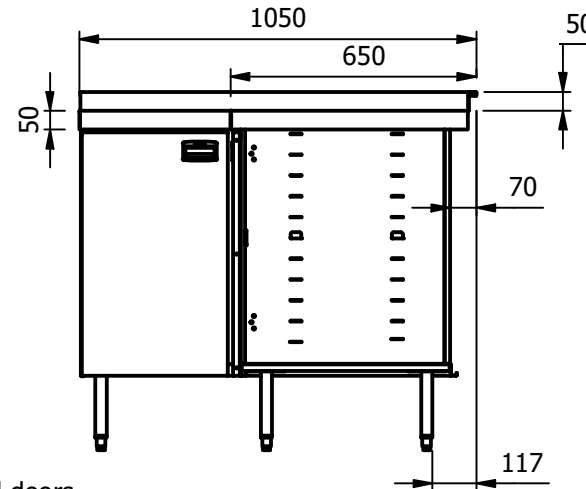
Typically worktop



Adjustable for height legs

Hinged doors with soft closing hinges

View with a standard work top with rear up-stand and 70mm rear void



Moffat Specification

Floor standing unit designed to hold GN 1/1 type pans

Dimensions

Width - 994mm / 1050mm with top
 Depth - 994mm / 1050mm with top
 Height - 897mm / 900mm with Top
 Weight - 40kg

Capacity

394 liters

Materials

0.7mm 430 Grade St/ Steel Structure
 1.2mm 430 Grade St/ Steel Structure

Installation

Floor Standing with adjustable height legs

ALL SHEET METAL DIMENSIONS ARE I/S (INSIDE SIZES) (UNLESS OTHERWISE STATED)

ALL DIMENSIONS IN (mm), TOLERANCE = LINEAR ± 0.5mm, ANGULAR ± 0.5mm (OR AS STATED). ALL SHARP EDGES TO BE REMOVED FROM SHEET METAL PARTS

Product	FABRICATION			Product No	<p>The Catering Equipment Company</p>				
Description	MBCC								
Material/Finish	Thickness		Desp/Date						
Legacy P/N	Weight	40kg	Quote No.						
Client			SO Number	STD	Dwg No.	UMA-073076	Issue		
Client Project			Approved By		Drawn By	ABB	-		
					Date	18/05/2020			
E & R MOFFAT LTD, SEABEGS ROAD, BONNYBRIDGE, FK4 2BS, T: +44 (0)1324 812272, E: sales@ermoffat.co.uk, Web: www.ermoffat.co.uk					Scale	1 : 20	Sheet	1 / 2	A4

No reproduction or publication of this drawing may be made, and no article may be manufactured or assembled in accordance with this drawing without prior written consent. This prohibition is a term of any contract relating to this drawing. Rights reserved under the Copyright Act 1956 as amended by the Design Copyright Act 1968.