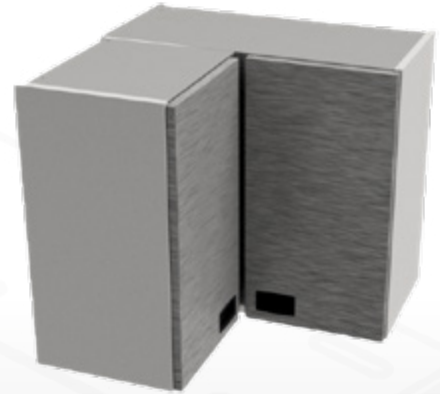


## Overview

Commercial grade wall corner cupboard designed to fit in line with the standard Moffat wall cupboard range. Fitted with hinged doors the corner unit is fully enclosed and fabricated in stainless steel. The internal mid shelf is removable and adjustable for height in 48mm increments. Designed with a flat roof as standard with the option of a sloping type roof. Doors are soft closing and very easy to remove and adjust fitted with sturdy easy clip in hinges and black recessed handles.

Note: Sliding doors are unavailable on the corner wall cupboard



WC65HCU

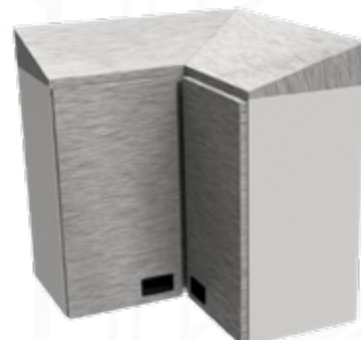
## Features:

- Corner wall mounted commercial stainless steel fully enclosed storage cupboard.
- Soft closing doors which open 170 degrees
- Aesthetic black recessed door handles.
- With handy adjustable overhead cabinet brackets for easy fitting and wall fixing.
- Adjustable height mid-Shelf.
- Standard cupboard height 600 mm, 700mm with the sloping roof option.

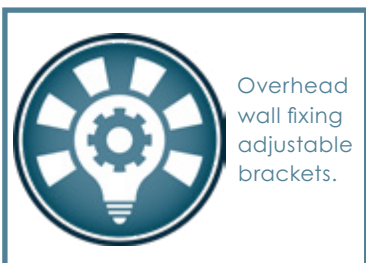


## Options:

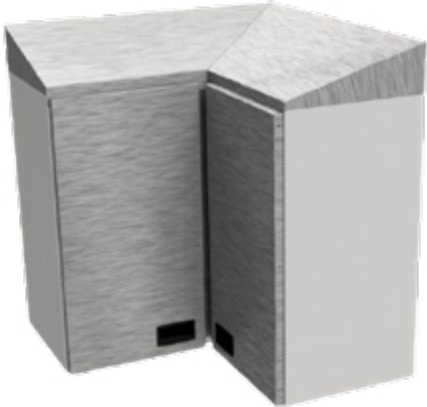
- Lockable doors [Two keys per lock].  
Add "L" to the model code.  
Example WC65HCUL
- Wall cupboard with a sloping top.  
A sloping top to the wall cupboard is more hygienic as it reduces surface build up of dust and debris and is easier to keep clean.  
Add "SR" to the model code  
Example WC65HCUSR.



WC8H with sloping roof option



WC65HCU

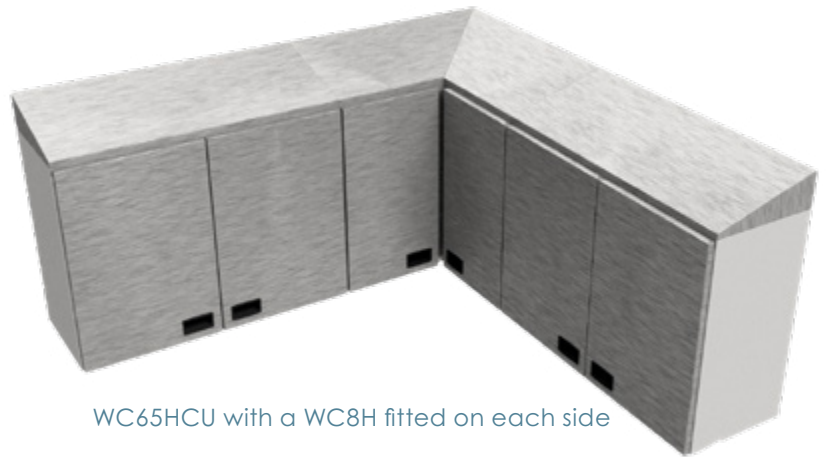
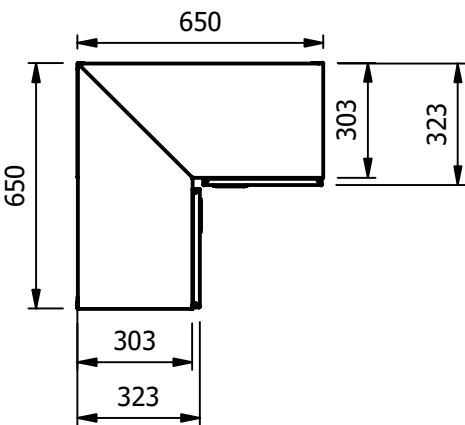


Hinged door models

Model	Weight (kg)	L x D x H (mm)	Height with sloping roof (mm)
WC65HCU	19	650 x 303 X 600	700

Capacity

Internal x L x D x H (mm)	Cabinet Capacity (Litres)
617 x 285 x 570	155
369 x 285 x 570	



WC65HCU with a WC8H fitted on each side

