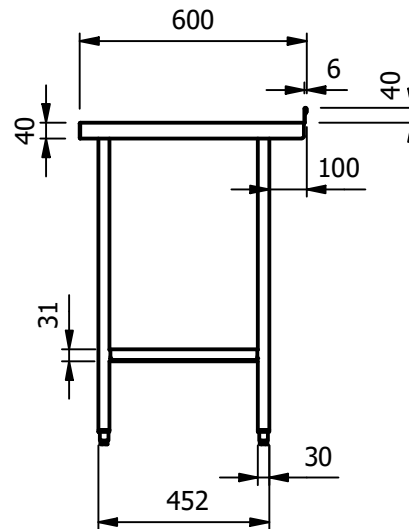
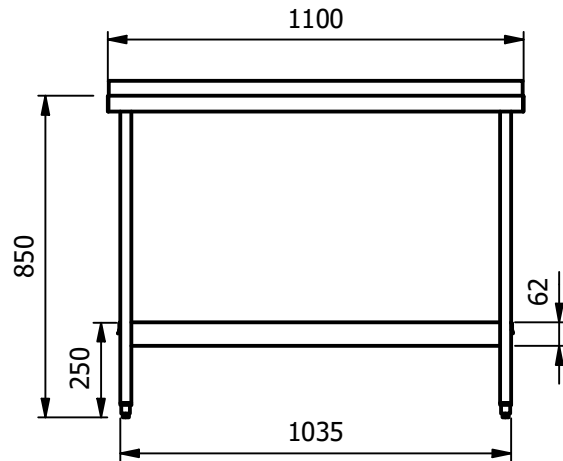


**DELIVERED FLAT**  
 No tools required for assembly  
 Fold out legs fitted to top,  
 separate undershelf clips into place.



**Moffat Specification**

Dimensions  
 Width - 1100mm  
 Depth - 600mm  
 Height - 850mm  
 Weight - 24kg

Materials

Top:- 1.2mm Thick 304 Grade St/Steel  
 Top turndown (Front & Ends):- 40mm  
 Upstand:- 40mm High / 6mm Return  
 Undertop:- 1.2mm Thick Galvanised Steel  
 Undershelf:- 1mm Thick 430 Grade St/Steel, 32mm Turndown  
 Legs:- 30x30mm 430 Grade St/Steel  
 Feet:- Aluminium Adjustable +20mm/-15mm  
 c/w:- Earth Bonding Tab

ALL SHEET METAL DIMENSIONS ARE I/S (INSIDE SIZES) (UNLESS OTHERWISE STATED)

ALL DIMENSIONS IN (mm), TOLERANCE = LINEAR ± 0.5mm, ANGULAR ± 0.5mm (OR AS STATED). ALL SHARP EDGES TO BE REMOVED FROM SHEET METAL PARTS

Product	FABRICATION			Product No	 The Catering Equipment Company	
Description	F116WB					
Material/Finish	Thickness		Desp/Date		<small>No reproduction or publication of this drawing may be made, and no article may be manufactured or assembled in accordance with this drawing without prior written consent. This prohibition is a term of any contract relating to this drawing. Rights reserved under the Copyright Act 1956 as amended by the Design Copyright Act 1968.</small>	
Legacy P/N	Weight	24kg	Quote No.	Dwg No.		WBA-070988
Client			SO Number	STANDARD	Issue	-
Client Project			Approved By		Drawn By	N.Raymen
E & R MOFFAT LTD, SEABEGS ROAD, BONNYBRIDGE, FK4 2BS, T: +44 (0)1324 812272, E: sales@ermoffat.co.uk, Web: www.ermoffat.co.uk				Date	14/04/2020	
				Scale	1 : 20	Sheet
						1 / 1
						<b>A4</b>