

Overview

Robust over-shelving with Quartz lamp heating. Cleverly designed offering a choice of one, two, or three tiers. Standard lengths are made to suit the Moffat Premier range of hot cupboards and Bainmaries, creating a functional heavy duty kitchen pass. The pass facilitates an easy two-way communication work station between restaurant front of house and the kitchen, where checks are placed and orders processed. Chefs plate up and place on the pass to be served and if there is a delay, plated food is held warm under the heat lamps. Complete with on/off switches to each level as standard and can be fitted with either an optional dimmer to control the lamps, or an energy saving timer switch. The unique horizontal illuminated bands on the end sections at each level provide an aesthetic style when viewed from the dining room.



Two tier shown with Hot cupboard & Bainmarie

Key Features:

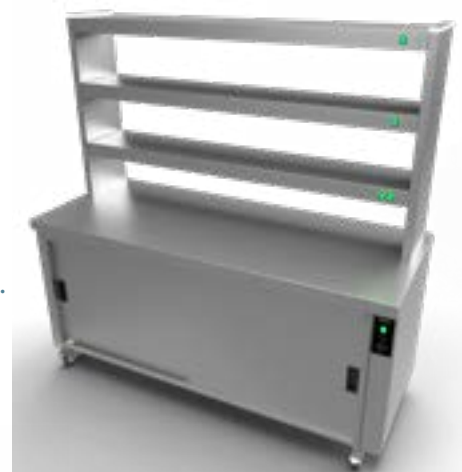
- Flexible choice off one, two, or three, tier design.
- Available in four standard lengths
- Standard sizes specific to Moffat Premier Hot cupboard and Bainmarie units.
- Alternative lengths and configuration are available, priced on application.
- Heavy duty robust 300mm wide shelving
- Low maintenance, easily cleaned and highly efficient.
- Attractive Illuminated end sections indicates service is “on”
- 24 hour operation.
- Supplied with a 2 metre long power cable and plug as standard
- Alternatively the units can be supplied hard wired into a Moffat supporting unit.

Options:

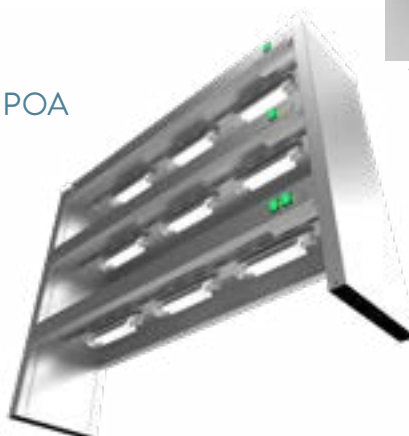
- Tab grabber (code:- MJG)
- Time delay switch for energy saving (Code:- TDS)
- Alternative lengths. POA
- Mixed configurations heated / non heated levels. POA



One tier shown with Hot cupboard



Three tier shown with Hot cupboard



Gantry options

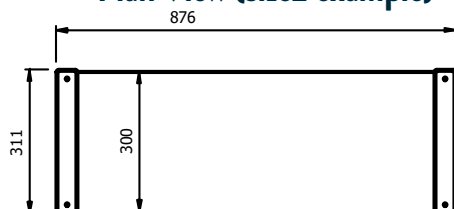
Heated models to suit Premier Hot cupboards and Bainmaries.

	Switch Controlled	Dimmer Controlled	Model Size	Weight (kg)	L x W x H (mm)	Number of 220w lamps	Electrical Supply	Power Rating (kw)
One Tier	KP2H1	KP2H1DMC	2	8	876 x 311 x 322	2	13amp	0.44
	KP3H1	KP3H1DMC	3	11	1196 x 311 x 322	3	13amp	0.66
	KP4H1	KP4H1DMC	4	15	1492 x 311 x 322	4	13amp	0.88
	KP5H1	KP5H1DMC	5	18	1796 x 311 x 322	5	13amp	1.10

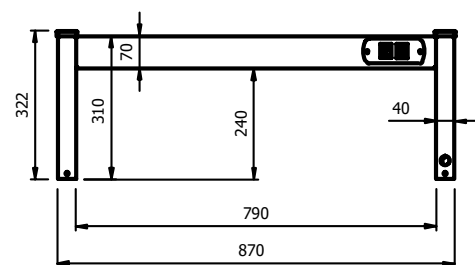
	Switch Controlled	Dimmer Controlled	Model Size	Weight (kg)	L x W x H (mm)	Number of 220w lamps	Electrical Supply	Power Rating (kw)
Two Tier	KP2H2	KP2H2DMC	2	16	876 x 311 x 632	4	13amp	0.88
	KP3H2	KP3H2DMC	3	22	1196 x 311 x 632	6	13amp	1.32
	KP4H2	KP4H2DMC	4	28	1496 x 311 x 632	8	13amp	1.76
	KP5H2	KP5H2DMC	5	34	1796 x 311 x 632	10	13amp	2.20

	Switch Controlled	Dimmer Controlled	Model Size	Weight (kg)	L x W x H (mm)	Number of 220w lamps	Electrical Supply	Power Rating (kw)
Three Tier	KP2H3	KP2H3DMC	2	24	876 x 311 x 942	6	13amp	1.32
	KP3H3	KP3H3DMC	3	32	1196 x 311 x 942	9	13amp	1.98
	KP4H3	KP4H3DMC	4	42	1496 x 311 x 942	12	13amp	2.64
	KP5H3	KP5H3DMC	5	52	1796 x 311 x 942	15	16amp	3.30

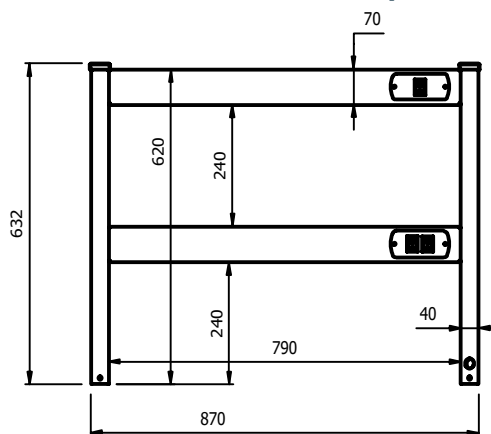
Plan View (size2 example)



One Tier (size 2 example)



Two Tier (size 2 example)



Three Tier (size 2 example)

